

SETTING UP AUTOCAD's DESKTOP ICON

RELEASE 2016

The AutoCAD Desktop icon contains access to the program's start-up parameters via a variety of command line switches (see page 2) that can be added to the Target & Start in areas. AutoCAD users are encouraged to set up a series of Desktop Icons for use with different projects and start-up settings.

Command line switches are used on the **Target line** to instruct the AutoCAD program to perform certain tasks upon start up. For instance, switches can be used to instruct AutoCAD to:

1. Start a drawing
2. Start a drawing in particular view
3. Launch a script file
4. Use a specific user profile
5. Inform AutoCAD where to find its configuration file
6. Begin a new drawing using a specified template file.

When the **REMEMBERFOLDERS** system variable is set to "0" (off) AutoCAD starts up using the folder assigned in the Start in area. Access the AutoCAD Desktop Icon Properties sheet by right-clicking on shortcut icon on the desktop then selecting "Properties" from the context sensitive menu list. Next, select the "Shortcut" tab and add the command line switches to the target line or change the Start in folder to the folder needed for your class.



Figure 1 – AutoCAD's Shortcut Icon

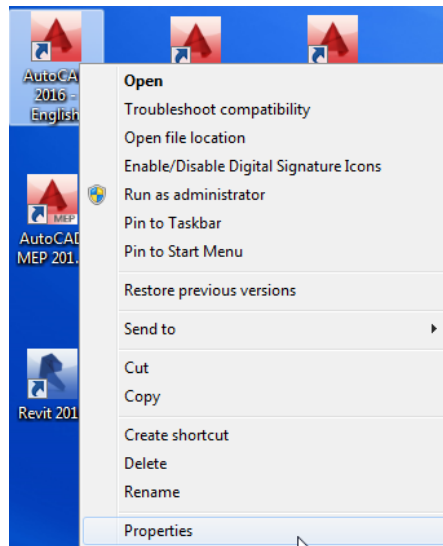


Figure 2 – Shortcut Icon Menu Options

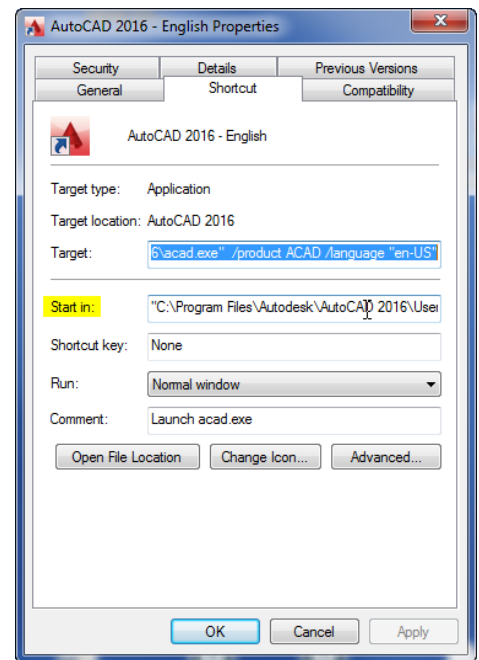


Figure 3 – AutoCAD's Shortcut Icon Properties Sheet

Note: REMEMBERFOLDERS MUST EQUAL "0"

CADD 101 Classes modify the Start in: area only

CADD 110 Classes modify the Start in: area only

CADD 120 Classes modify the Start in: & Target: line (add Profile/Workspace name)

CADD 220 Classes modify the Start in: & Target: line (add Profile/Workspace name, /p or /w, and Configuration files location, /c)

Available command line switches:

Command Line Switch Reference

This table lists the command line switches you can use for custom command line startup of the program.

/b	Script name	Designates a script to run after you start the program (b stands for batch process). Scripts can be used to set up drawing parameters in a new drawing file. An SCR file type is assumed.
/t	Template file name	Creates a new drawing based on a template or prototype drawing. A DWT file type is assumed.
/c	Configuration folder	If you don't set the /c switch, the executable directory is searched and the ACADCFGW or ACADCFG environment variable is used as a way to define the configuration file and directory location.
/v	View name	Designates a particular view of the drawing for display at startup.
/ld	ARX or DBX application	Loads a specified ARX or DBX application. Use the following format: <path><filename>.ARX If the path or file name contains spaces, then the path or file name should be wrapped in double quotes. If no path information is included, the program search path is used.
/s	Support folders	Designates support folders other than the current folder. Drawing support files include text fonts, menus, AutoLISP files, linetypes, and hatch patterns. The maximum number of folders you can specify in the path is 15. Each folder name is delimited by semicolons.
/r	Default system pointing device	Restores the default system pointing device. It creates a new configuration file (<i>acad2010.cfg</i>) and renames the previous configuration file to <i>acad2010.bak</i> .
/nologo	No product logo screen	Starts the program without first displaying the logo screen.
/p	User-defined registry profile for starting the program	Specifies a user-defined registry profile for starting the program. The selected profile is in effect only for the current session of the program, unless you make another profile current in the Options dialog box during that session. You create or import profiles on the Profiles tab in the Options dialog box. With the /p switch, you can specify the name of a profile that is listed in the Options dialog box or the file name of an exported profile (ARG) file. If the profile does not exist, the current profile is used.
/nohardware	Disables hardware acceleration	Disables hardware acceleration on startup.
/nossm	No Sheet Set Manager window	Suppresses the display of the Sheet Set Manager window on startup.
/set	Sheet set	Loads the named sheet set on startup. Use the following format: <path><sheet set data file>.DST
/w	Default workspace	Designates which workspace in the loaded CUIx files should be restored on startup.
/pl	Background plotting/publishing	Publishes a drawing set descriptions (DSD) file in the background. Use the following format: <path><drawing set descriptions file>.DSD

<http://docs.autodesk.com/ACD/2013/ENU/files/GUID-8E54B6EC-5B52-4F62-B7FC-0D4E1EDF093A.htm>